



# Town of Surfside Beach Stormwater Utility Fee Ordinance

April 8, 2019

# What Do We Pay For?

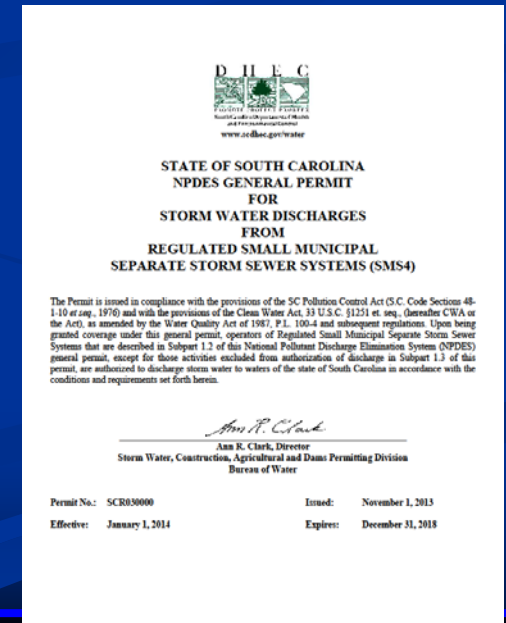
- MS4 Compliance (EPA/DHEC Mandates)
- Lake Maintenance (Including Fountains)
- Water Quality Monitoring Program
- System Maintenance
- New Infrastructure
- Emergency Repairs



# SCDHEC NPDES Phase II MS4 Permit Requirements

## Six Minimum Control Measures:

- *Public Education and Outreach*
- *Public Involvement/Participation*
- *Construction Site Stormwater Runoff Control*
- *Post-Construction Site Stormwater Runoff Control*
- *Illicit Discharge Detection and Elimination*
- *Pollution Prevention/Good House Keeping*



**D H E C**  
SOUTH CAROLINA  
DEPARTMENT OF  
HEALTH AND ENVIRONMENTAL CONTROL  
www.scdhec.gov/water

**STATE OF SOUTH CAROLINA  
NPDES GENERAL PERMIT  
FOR  
STORM WATER DISCHARGES  
FROM  
REGULATED SMALL MUNICIPAL  
SEPARATE STORM SEWER SYSTEMS (SMS4)**

The Permit is issued in compliance with the provisions of the SC Pollution Control Act (S.C. Code Sections 48-1-10 et seq., 1976) and with the provisions of the Clean Water Act, 33 U.S.C. §1251 et. seq., (hereinafter CWA or the Act), as amended by the Water Quality Act of 1987, P.L. 100-4 and subsequent regulations. Upon being granted coverage under this general permit, operators of Regulated Small Municipal Separate Storm Sewer Systems that are described in Subpart 1.2 of this National Pollutant Discharge Elimination System (NPDES) general permit, except for those activities excluded from authorization of discharge in Subpart 1.3 of this permit, are authorized to discharge storm water to waters of the state of South Carolina in accordance with the conditions and requirements set forth herein.

*Ann R. Clark*  
Ann R. Clark, Director  
Storm Water, Construction, Agricultural and Dams Permitting Division  
Bureau of Water

Permit No.: SCR030000      Issued: November 1, 2013  
Effective: January 1, 2014      Expires: December 31, 2018



# New Infrastructure (3<sup>rd</sup> North)



# Stormwater CIP Projects

Description	Estimated Cost
Dogwood Swash – Replace Ocean Blvd Culvert Bridge	\$700,000
Phase II North Side Drainage Project	\$1,000,000
Floral Swash – Replace Bulkheads	\$350,000
Phase III North Side Drainage Project	\$1,000,000
Melody Basin – Eliminate Discharge into Garden City	\$400,000
<b>Total</b>	<b>\$3,450,000</b>

# Utility Considerations

- Easy to understand
- Fair and equitable
- Legally defensible

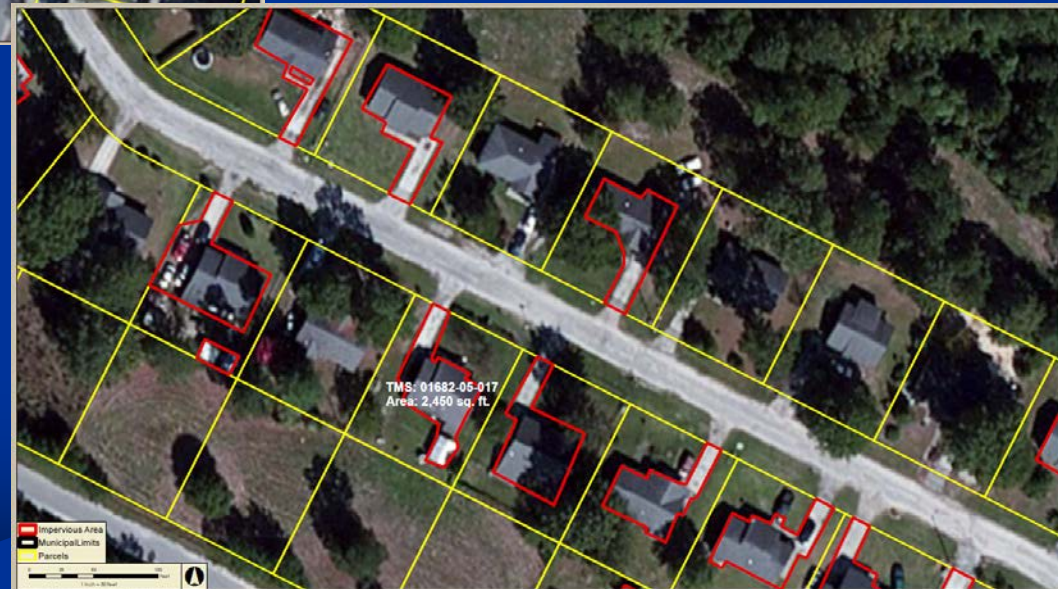


# ERU Method

- **Impervious area** means the area of a property covered by roofs, paved driveways, paved parking lots, paved sidewalks and other paved surfaces.
- **ERU (equivalent residential unit)** represents the impervious area on a typical residential property.



# Residential Impervious



ERU = 2,531 sq. ft.



# Commercial Impervious

6



- Shared Ownership Parcels
- Digitized Impervious Surfaces
- Null Parcels - No Owner or TMS



Client:	Project:	Revision:	Scale:	Author:

Thomas & Hutton compiled the map information from the following sources:

Date:	Source:	Date:

DISCLAIMER: Thomas & Hutton is not to be held liable for any errors or omissions on this map. The client is responsible for the accuracy of the data and the representation of the data on this map. This map is not to be used for any other purpose than that intended. Copyright © 2011 by Thomas & Hutton. No part of this document may be reproduced without written permission from an officer of Thomas & Hutton.

## Exhibit 1 - Surfside Impervious Surface Calculations

Surfside, Horry County, SC

Overlapping Parcels and Unaccounted Parking Lots



682 JOHNNIE DODDS BLVD • SUITE 100  
 HT. PLEASANT, SC 29454 • 843.349.0200  
 WWW.THOMASANDHUTTON.COM

GEOGRAPHIC INFORMATION SYSTEMS

COPYRIGHT © 2011 THOMAS & HUTTON

## Recommended Utility Fee Structure

Property Class	Proposed Rate
Single Family Residential	1 ERU/Unit
Nonresidential (Commercial/Industrial)	Impervious ft <sup>2</sup> ÷ 2,531 ft <sup>2</sup> /(ERU)
Multi-family	Impervious ft <sup>2</sup> ÷ 2,531 ft <sup>2</sup> /(ERU)
Vacant/Undeveloped	Not Assessed
<b>AVG. Monthly SFR FEE</b>	\$6.83
<b>AVG. Annual SFR FEE</b>	\$82.00

# STORMWATER UTILITY RATES

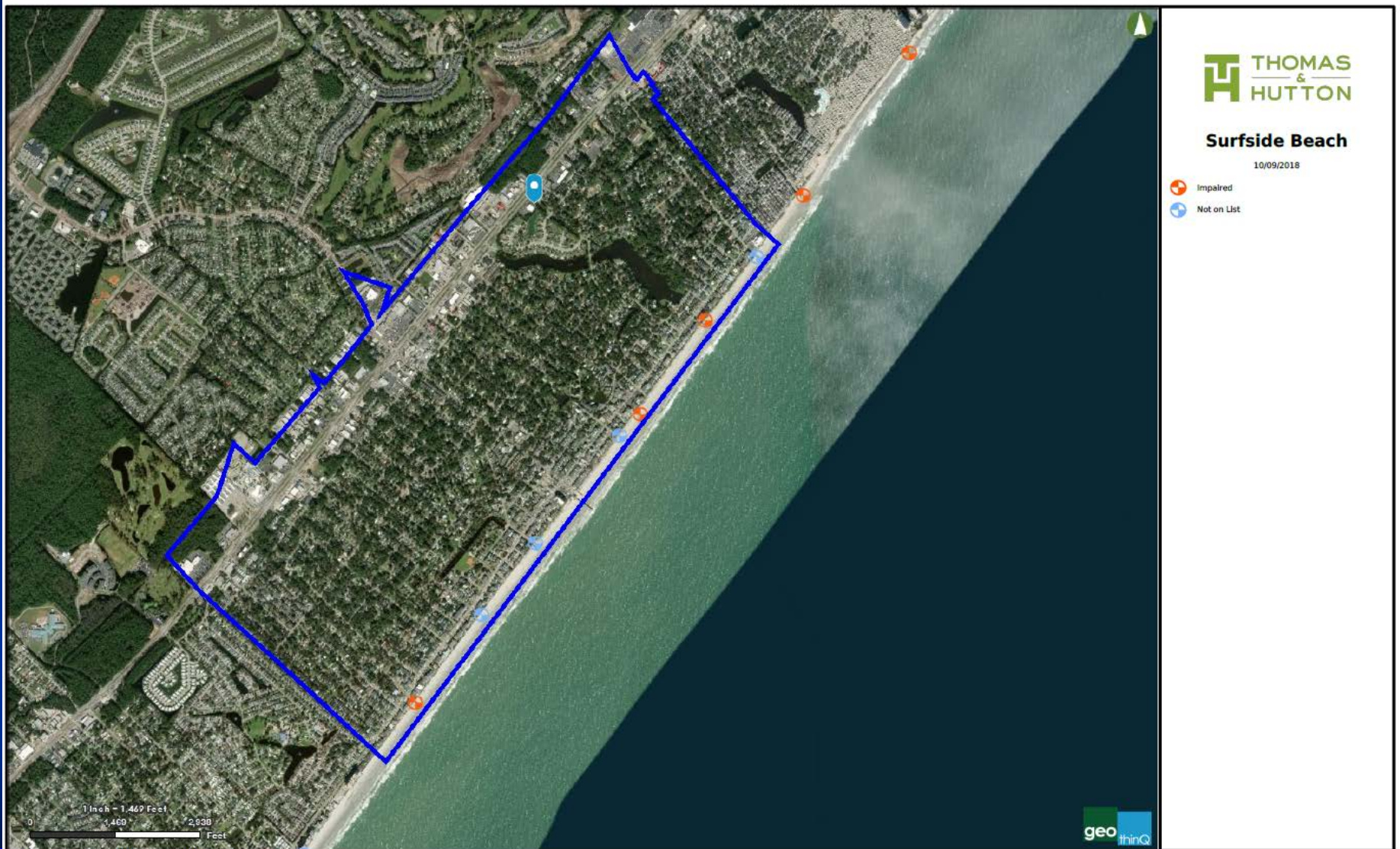


# Summary

- Capital and Operating expenses related to Stormwater are an obligation of the Town.
- Utility Fees are an equitable way to charge users for their impact on the system.
- Coastal proximity makes Surfside Beach vulnerable to storm impacts.
- A responsible program for system maintenance and improvement must be implemented, and adhered to.



# Questions/Comments



## Surferside Beach

10/09/2018

- Impaired
- Not on List