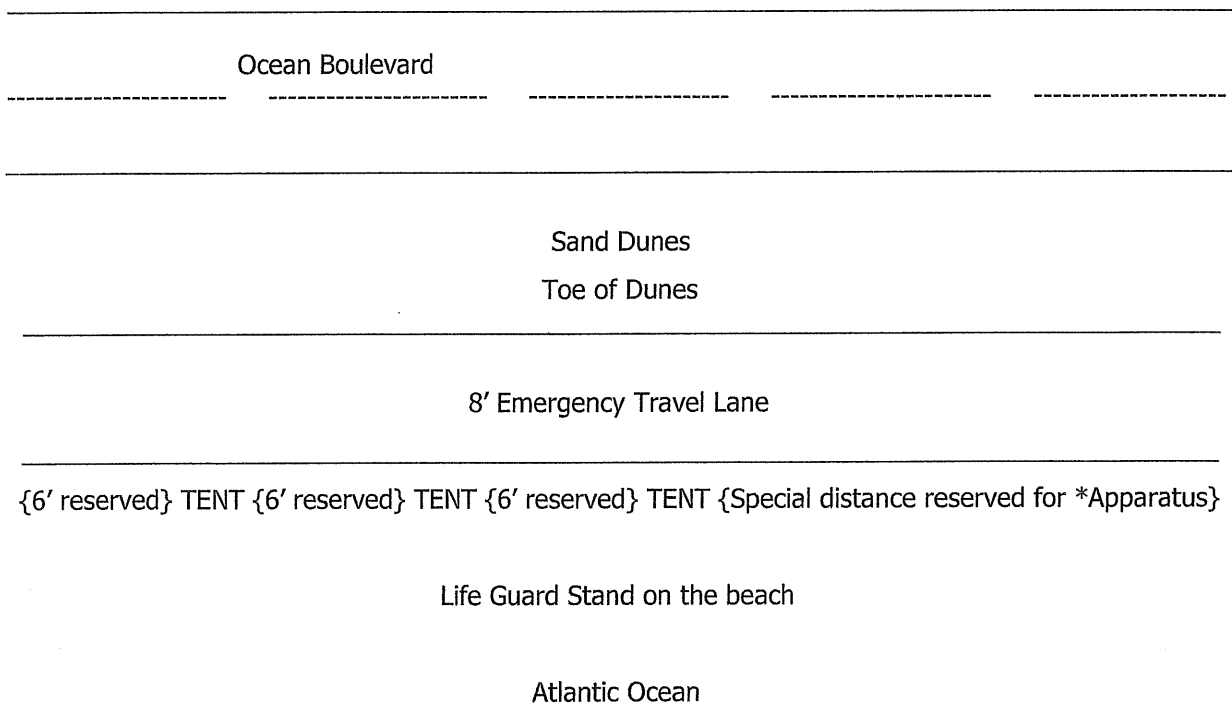


Mr. Mayor, I move to amend Section 12-67 Obstructions on the beach to state:

Tents no larger than 10' x 10' shall be allowed contiguous to the town's beach emergency lane so long as there is at least six (6') feet between each tent, and tents shall have straight tie-downs. A single row of tents from Melody Lane to 17<sup>th</sup> Avenue North shall be allowed. Emergency access locations require additional clearance guidelines as follow to accommodate emergency apparatus.

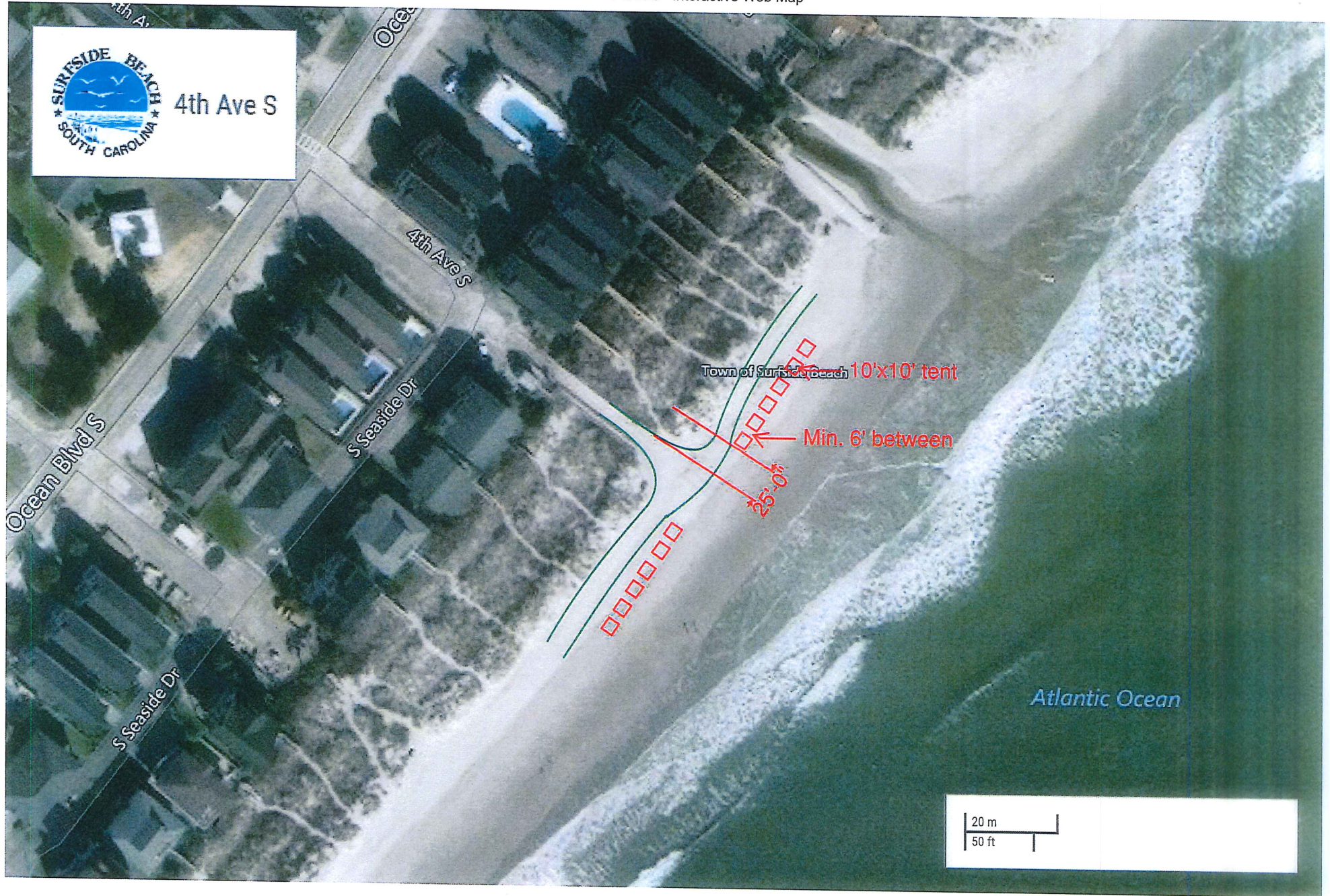
<b>*Emergency Apparatus Access</b>	<b>North Side</b>	<b>South Side</b>
Melody Lane	25 feet	n/a (in County)
4 <sup>th</sup> Avenue South	25 feet	25 feet
Pier	150 feet	100 feet
7 <sup>th</sup> Avenue North	25 feet	25 feet
13 <sup>th</sup> Avenue North	25 feet	25 feet
17 <sup>th</sup> Avenue South	n/a (in County)	25 feet

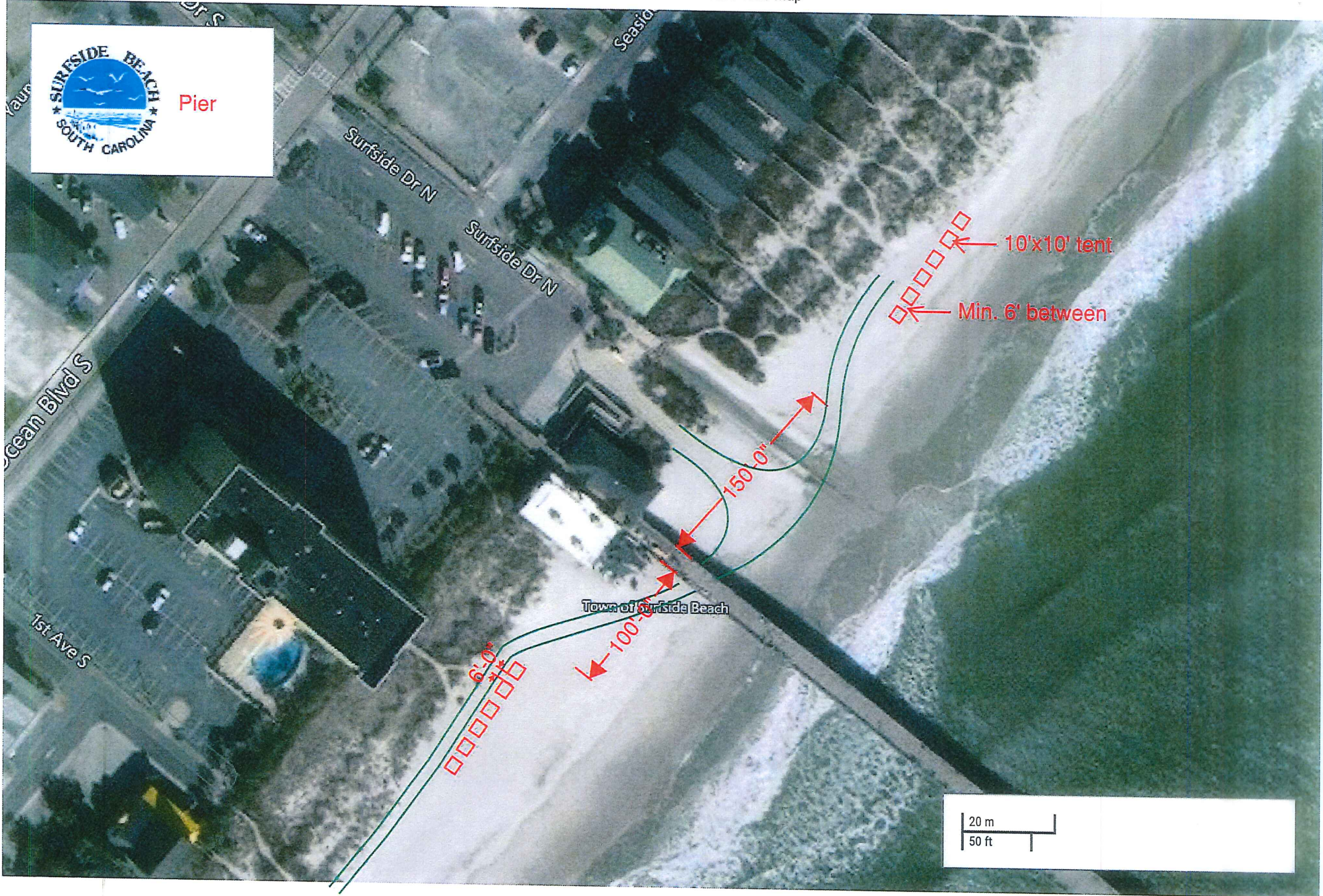
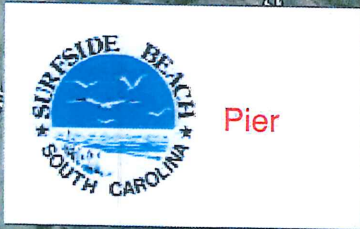
Diagram:



See photos attached for respective Emergency Apparatus Access locations











13th Ave N.



